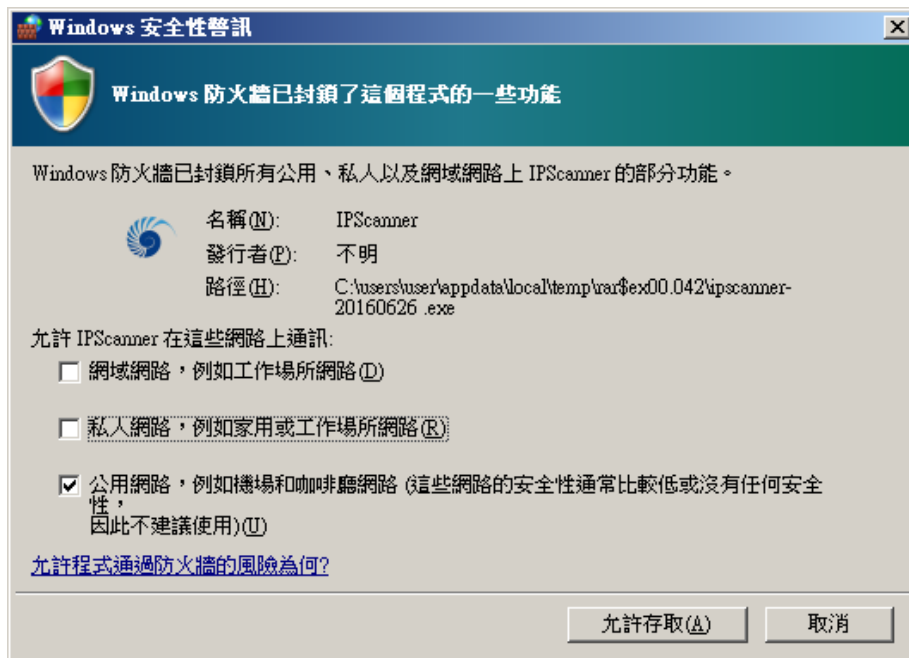
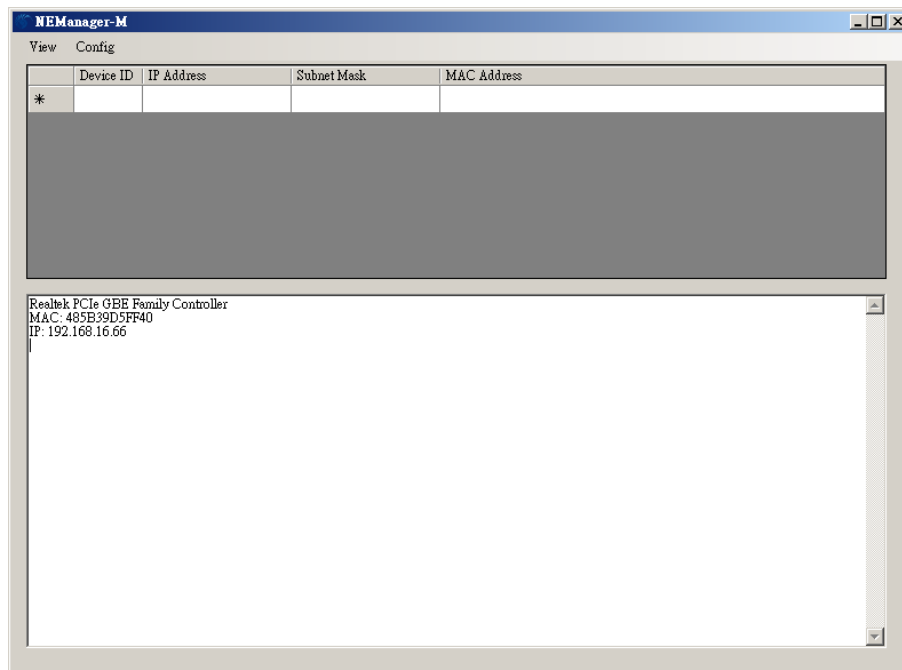


LAN Setup

- 1.Connecting the network line to the equipment, connect the other side of the network line to the HUB.
2. Run the IPScanner.EXE, If a Windows security alert appears, please select a public network, and then click "Allow Access",



The following screen will appear. if not , please press F5 to search again, or check the first step was succeed or not.



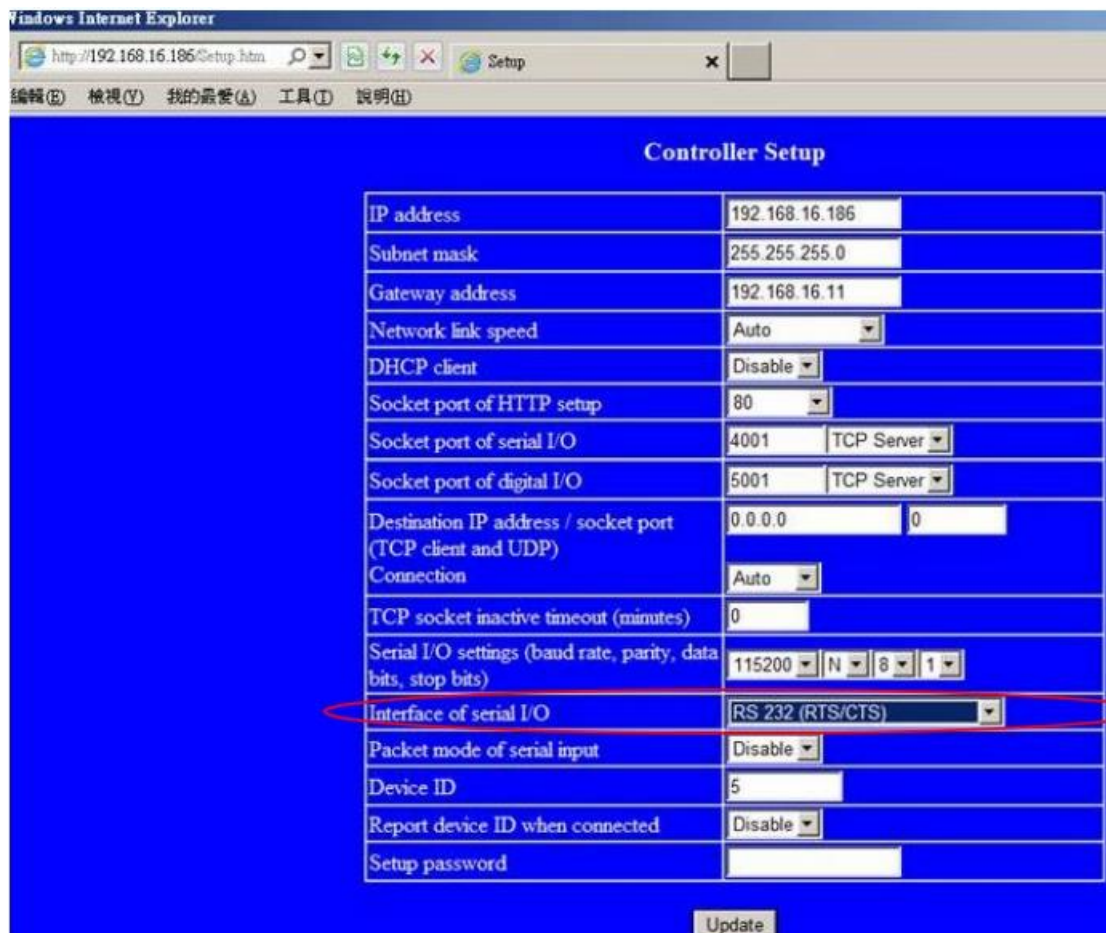
3.It will be shown the installation which has been searched on the screen , click it and select the Set IP Address bellows Config :



A dialog box titled "Set IP Address" with two input fields and two buttons. The "IP Address" field contains "192.168.16.123" and the "Subnet Mask" field contains "255.255.0.0". There are "OK" and "Cancel" buttons to the right of the fields.

4.Set an useful IP Address and Subnet Mask.

5.It will be shown the Setup Device as the following figure if all steps was corrected to be run.



A screenshot of a web browser window titled "Windows Internet Explorer" showing a "Controller Setup" page. The page has a blue background and contains a table of configuration settings. The "Interface of serial I/O" setting is highlighted with a red oval and is set to "RS 232 (RTS/CTS)".

Controller Setup	
IP address	192.168.16.186
Subnet mask	255.255.255.0
Gateway address	192.168.16.11
Network link speed	Auto
DHCP client	Disable
Socket port of HTTP setup	80
Socket port of serial I/O	4001 TCP Server
Socket port of digital I/O	5001 TCP Server
Destination IP address / socket port (TCP client and UDP)	0.0.0.0 0
Connection	Auto
TCP socket inactive timeout (minutes)	0
Serial I/O settings (baud rate, parity, data bits, stop bits)	115200 N 8 1
Interface of serial I/O	RS 232 (RTS/CTS)
Packet mode of serial input	Disable
Device ID	5
Report device ID when connected	Disable
Setup password	

Update

6.Insert the numbers as the following :

- i.IP Address
- ii.Subnet Mask
- iii.Gateway Address
- iv.Network link speed : AUTO
- v.DHCP client :The DHCP is set Disable
- vi.Socket port of HTTP setup : It is set to be 80 , don't need to change
- vii.Socket port of serial I/O : Set it to be 4001

viii.Socket port of digital I/O : Set it to be 5001

ix.Destination IP address / socket port (TCP client and UDP) Connection : Don't need to change

x.Serial I/O settings (baud rate, parity, data, bits, stop bits) :Insert 115200, N, 8, 1

xi.Interface of serial I/O : Set RS-232(RTS/CTS)

xii.Packet mode of serial input : It is set to be Disable

xiii.Device ID : It is set to be 5

xiv.Setup password : Not required.

xv.Access password : Not required.